



ZAKŁAD PRODUKCYJNO - USŁUGOWY - HANDLOWY

There's door in every house



Product catalog

www.henzym.pl

Welcome to our catalog

We are pleased to present a range of products that can contribute to more efficient production in your companies. In order to familiarize yourself with our offer, we encourage You to view photos and product parameters on the following pages or visit www.henzym.pl

Samples

In order to test the suitability of our products to your needs, you can use the opportunity to obtain free samples.

Place an order today at tel: +48-500-387-925 or fax: +48 58 572-19-99
or e-mail: henzym@henzym.pl

Availability of colors

Please note that most of our products can be produced in different colors by RAL pallet on request of the customer

Services

Since the beginning of the activities we offer tooling services.

Due to our own tool shop and skilled workers we can produce forms, punches and other tools according to the customer's order.

For more information call +48-500-387-925 or email to henzym@henzym.pl

Customers

HENZYM company is well known brand in Poland. Tools and goods produced in our company, are used by the biggest door and door-frames manufacturers in Poland. Our goods are used in Ukraine, Romania, Hungary, Slovakia and Bosnia and Herzegovina also.

Delivery

We hereby declare, that all main delivery will be made by our company. For smaller orders, we usually asking the main delivery companies in Poland to deliver it to you. Depending on Your order will be produced and delivered as soon as possible.

Ordering

Orders can be placed through fax +48 58 572-19-99 every day 24/7,
by mobile phone +48-500-387-925 between 8:00 - 16:00
or through email henzym@henzym.pl

Compounding

Our company is still growing and expanding according to the customers request. Because of that we started recycling plastic. We are buying and selling plastic too. If you would like to get more informations about that - feel free to call us: +48 502 151 364 or visit our website.



Ladies and Gentlemen

HENZYM is a dynamically developing productive, service and commercial company specializing in the plastic processing by the injection moulding method and mechanic forming of metals since 1992

Our offer is primarily used in the production details of door frames and doors. Recently we extended our residence by the new production hall and increased production capacity by investing in modern machinery, so that we can deliver high quality goods on time.

Due to years of experience we can precisely estimate the cost to reliably calculate prices.

We hope that because of this, we can earn Your trust so far given to demanding Polish and foreign companies and factories.

With kind regards
The owners



Zbigniew Katarzyński

WOODEN DOORFRAMES

Hinges attachments	page
Hinge seating	1
Hinge clamping ring	1
Hinge blockade	2
Hinge pocket QBC	2
Spacing washer	3
Allen keys	3
Doorframe seating automatically adjustable	4
 Fasteners	
Two-factor connector	5
Eccentric rod	6
Metallic connector-twisted	6
Hardened connector	6
 Coupling lock plates	
Coupling lock plates models 101 to 115	7
Automatic coupling lock plates	15
Coupling lock plates for a glass doors	15
Masking hole plugs	16
 Other elements	
Corner beads	17
Stationary doorframes coasters	17
Hole plugs	18
Masking slat striker	18
Burglary-proof masking pin hole can	19
Double door latch bolt	19

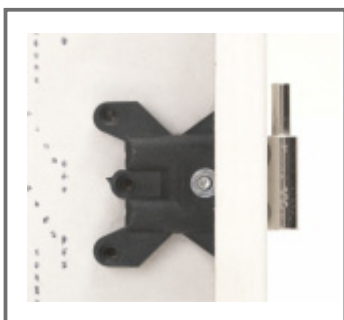
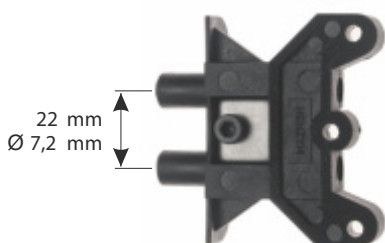
METAL DOORFRAMES

Cans	
Cylindrical can	20
405 lock can	20
406 lock can	21
Burglary-proof can	21
Riveting holes cylindrical can	22
 Reinforcements	
Catching hole reinforcement	23
Reinforcement bracket	23
 Connectors	
Angular corners connector	24
Corners connector	24
 Other accessories	
Sling striker "ear"	25
Small tongue	25
Large corner	26
Large turnbuckle	26
Small turnbuckle	27
Assembly anchor	27

DOOR ACCESORIES

Other accesories	page
Transitory toilet door ventilation tubes	28
Strainer toilet door ventilation tubes	29
Door corner beads	29
Burglary-proof pin with metal plate	30
Window panel assembling plate	30
Self-closing bracket	30
Burglary-proof pins	30
Technical doors corner beads	31
Window panel type EI60 assembling plate	32
Door anchor	32
Burglary-proof pin striker	33
Lock pins	34

Adjustable doorframe hinge seating



MATERIAL:

Polyamide strengthened with 30% fiberglass
PA-6 GF30;
flange nut M5; allen screw M5x12; the pressure plate steel ST3 #3mm.

OVERALL DIMENSIONS:

64,5x64,6x19

APPLICATION:

mounting of hinges in adjustable doorframe.
Resistance certified technical approval
AT-06-0816/2005.

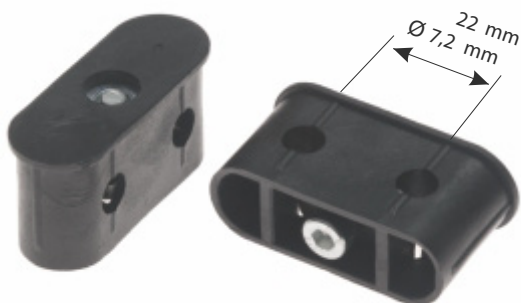
PACKAGE:

500 pcs



Allen key in the offer: 4L, 4Z, 5L

Stable doorframe hinge clamping ring



Allen key in the offer: 4L, 4Z, 5L

MATERIAL:

Polyamide strengthened with 30% fiberglass
PA-6 GF30;
flange nut M5; allen screw M5x16; the pressure plate steel ST3 #4mm.

OVERALL DIMENSIONS:

48x18x24 mm

APPLICATION:

mounting of hinges in stable doorframe.
Resistance certified with technical approval
AT-06-0816/2005.

PACKAGE:

600 pcs

Hinge blockade



MATERIAL:

tube made of free-cutting tube Ø12 covered by zinc coating + binding screw SIM M8x10, M8x12, M8x14

OVERALL DIMENSIONS:

height 19mm, Ø hinge hole 7,2 mm

APPLICATION:

mounting of hinges in stable and adjustable doorframe.

PACKAGE:

1000 pcs



Allen key in the offer: 4L, 4Z, 5L

Hinge pocket QBC + plastic washer



MATERIAL:

Pocket – Polyamid PA-6;
Washer – Polypropylene PP.

OVERALL DIMENSIONS:

Pocket – 145x72x30 mm

APPLICATION:

mounting of hinges hidden in the doorframe

PACKAGE:

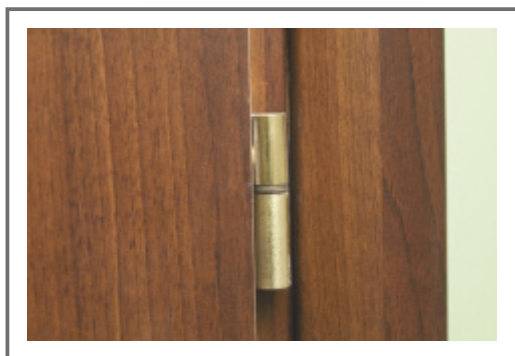
200 pcs

COLOUR:

Pocket – black; Washer – brown.



Spacing washer under the hinge



MATERIAL:

sheet DC01 #1 mm or brass sheet

OVERALL DIMENSIONS:

Polish standard 13x9x1

Czech standard 15x10x1

APPLICATION:

doorframes hinges height adjustment

PACKAGE:

2000 pcs

COLOUR:

yellow galvanized

Allen key 4L and S, 5L and S



MATERIAL:

steel bar Ø 4 or Ø 5 hexagon,
electroplated coating – white zinc.

APPLICATION:

tightening the Allen screws

PACKAGE:

1000 pcs

Doorframe seating automatically adjustable

**MATERIAL:**

Seating made of plastic
Polyamide strengthened with fiberglass PA-6
GF30. Abrasion-resisting, high resistance and
stiffness

OVERALL DIMENSIONS:

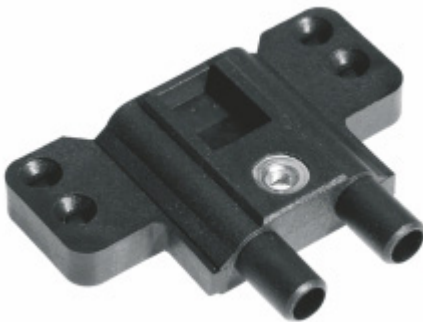
75,3x59x16

APPLICATION:

It is used for attaching hinges adjustable door
frame . The seating is adapted for mounting on
the machine.

PACKAGE:

600 pcs



Adjustable doorframe two-factor connector



MATERIAL:

Polyethylene HDPE.

OVERALL DIMENSIONS:

total length 40mm (10/30) Ø 8 mm

APPLICATION:

Combining adjustable frames for 90°. We recommend the use of screws **Fischer** 3,5x45 and 3,5x50

PACKAGE:

2000 sets

Stable doorframe two-factor connector – short



MATERIAL:

Polyethylene HDPE.

OVERALL DIMENSIONS:

total length 43mm (28/15) Ø 8 mm

APPLICATION:

Combining stable frames for 90°. We recommend the use of screws **Fischer** 3,5x45 and 3,5x50

PACKAGE:

2000 sets

Stable doorframe two-factor connector – long



MATERIAL:

Polyethylene HDPE.

OVERALL DIMENSIONS:

total length 55mm (40/15) Ø 8 mm

APPLICATION:

Combining stable frames for 90°. We recommend the use of screws **Fischer** 3,5x45 and 3,5x50

PACKAGE:

2000 sets

Eccentric rod



MATERIAL:

The plastic part - Polyamid PA-6 GF30;
the metal part - spring-loaded sheet #1,5 mm
coated with zinc.

OVERALL DIMENSIONS:

The plastic parts Ø 19,8x7
the metal parts 32x12x10 mm

APPLICATION:

Combining doorframes and masking door trim.

PACKAGE:

2500 set

Metallic connector-twisted



MATERIAL:

The basic element and the pressure plate steel
made from steel sheet # 2 mm coated with
zinc,
screw M4x12.

OVERALL DIMENSIONS:

36x18x10 mm

APPLICATION:

Combining doorframes and masking door trim.

PACKAGE:

1500 pcs

Hardened connector



MATERIAL:

spring-loaded hardened sheet #1 mm oxidized
and coated with zinc

OVERALL DIMENSIONS:

28x16x28 mm

APPLICATION:

Used for connecting the frame

PACKAGE:

3000 pcs

Dear Sir or Madam!

All our coupling lock plates are made with the utmost precision. In order to provide you with high quality goods, we use cold rolled sheet DC-01.

Corrosion protection provides six types of coatings: powder coating - the color of gold EGL and silver SRP, electroplated: white zinc, yellow zinc, chrome, brass, satin as well as the execution of stainless steel.

In addition, we offer screws and 5 types of plastic covers to mask the door frames holes.

We also realize individual orders, in which the client wishes a different color or type of coating than that which we have a standing offer!

We are happy to broaden our range of products with new designs! Even today, send us a model or a technical drawing of the coupling plate that you use in your frame. We can probably do it at a better price while providing the same or better quality!

Detailed information on the various dimensions served on request.

Coupling lock plate model 101



MATERIAL:

Steel sheet z/w DC-01 #1,5 mm, # 2 mm;
EI30 version # 2,5 mm;

OVERALL DIMENSIONS:

PN 170x20x8

PACKAGE:

180 set, 440 set.

COUPLING LOCK PLATES

Coupling lock plate model 102



MATERIAL:

Steel sheet z/w DC-01 # 2 mm;
Available in the right and left version.

OVERALL DIMENSIONS:

PN 170x20x8

PACKAGE:

180 set.



Coupling lock plate model 103



MATERIAL:

Steel sheet z/w DC-01, # 2 mm;

OVERALL DIMENSIONS:

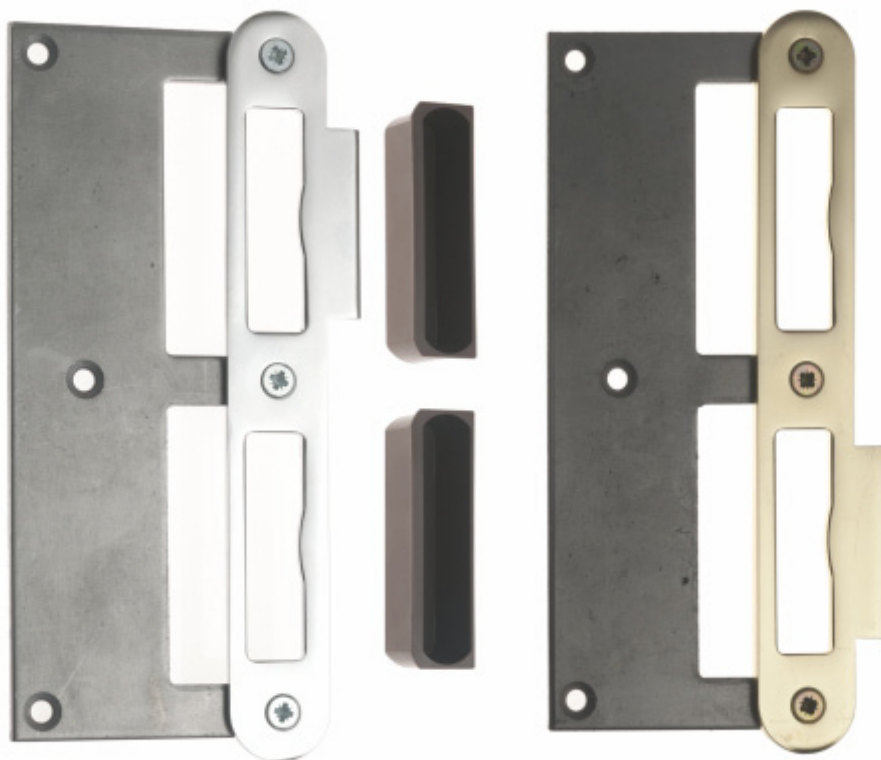
97x20x8

PACKAGE:

negotiated

COUPLING LOCK PLATES

Coupling lock plate model 104

**MATERIAL:**

Steel sheet z/w DC-01,
2,5 mm;

OVERALL DIMENSIONS:

172x24
holes: 44,5x8,5

APPLICATION:

In rebated doorframes

ACCESSORIES:

Hole plugs
screws M4x16

PACKAGE:

negotiated

Coupling lock plate model 105

**MATERIAL:**

Steel sheet z/w DC-01, # 2,5 mm;

OVERALL DIMENSIONS:

170x28x8

APPLICATION:

In EI 30 doorframes

PACKAGE:

negotiated

Coupling lock plate model 106

**MATERIAL:**

Steel sheet z/w DC-01, # 2,5 mm;
Available in the right and left version.

OVERALL DIMENSIONS:

180x24
upper tab 44,5x6
hole 51,5x13,5

APPLICATION:

In EI 30 doorframes

PACKAGE:

negotiated

Coupling lock plate model 107

**MATERIAL:**

Steel sheet z/w DC-01, # 2,5 mm;

OVERALL DIMENSIONS:

170x28x8v

APPLICATION:

Doorframes with electromagnetic card lock

PACKAGE:

negotiated

COUPLING LOCK PLATES

Coupling lock plate model 108

**MATERIAL:**

Steel sheet z/w DC-01, # 2 mm;
Available in the right and left version.

OVERALL DIMENSIONS:

178,75x28x33,8

APPLICATION:

Doorframes with electromagnetic card lock

PACKAGE:

negotiated

Coupling lock plate model 109

**MATERIAL:**

Steel sheet z/w DC-01, # 2 mm;
Available in the right and left version.

OVERALL DIMENSIONS:

222x28x33,8

APPLICATION:

Doorframes with audio permeability 42db and
electromagnetic card lock

PACKAGE:

negotiated

Coupling lock plate model 110

**MATERIAL:**

Steel sheet z/w DC-01, # 2 mm;
Available in the right and left version.

OVERALL DIMENSIONS:

178,75x28x35

APPLICATION:

Doorframes MDF 100
with electromagnetic card lock

PACKAGE:

negotiated

Coupling lock plate model 111

**MATERIAL:**

Steel sheet z/w DC-01, # 2 mm;

OVERALL DIMENSIONS:

222x26x20,5

APPLICATION:

Doorframes with electromagnetic card lock

PACKAGE:

negotiated

Coupling lock plate model 112

**MATERIAL:**

Steel sheet z/w DC-01, # 2 mm;

OVERALL DIMENSIONS:

134x28x8

APPLICATION:

Symmetrical striker used in doorframes with electromagnetic card lock

PACKAGE:

negotiated

Coupling lock plate model 113

**MATERIAL:**

Steel sheet z/w DC-03, # 2 mm;

OVERALL DIMENSIONS:

92x28x8

PACKAGE:

negotiated

Coupling lock plate model 114

**MATERIAL:**

Steel sheet DC-03, # 2 mm;

OVERALL DIMENSIONS:

97x28x8
hole 19x14

PACKAGE:

negotiated

Coupling lock plate model 115

**MATERIAL:**

Steel sheet DC-01, # 2 mm;

OVERALL DIMENSIONS:

92x28x8
hole 23x17

APPLICATION:

In Assa Abloy EL 582 lock doorframe

PACKAGE:

negotiated

Automatic coupling lock plates

**MATERIAL:**

Steel sheet DC-01, # 1,5 mm, electroplated coating - white zinc.
Support made of polypropylene.

OVERALL DIMENSIONS:

170x28x8

APPLICATION:

Used for automatic adjustable frames

PACKAGE:

negotiated

Coupling lock plates for a glass doors

**MATERIAL:**

Steel sheet DC-01, # 2 mm, electroplated coating - white zinc.

OVERALL DIMENSIONS:

110x24x9, hole 50x12, Ø hole 5 mm.

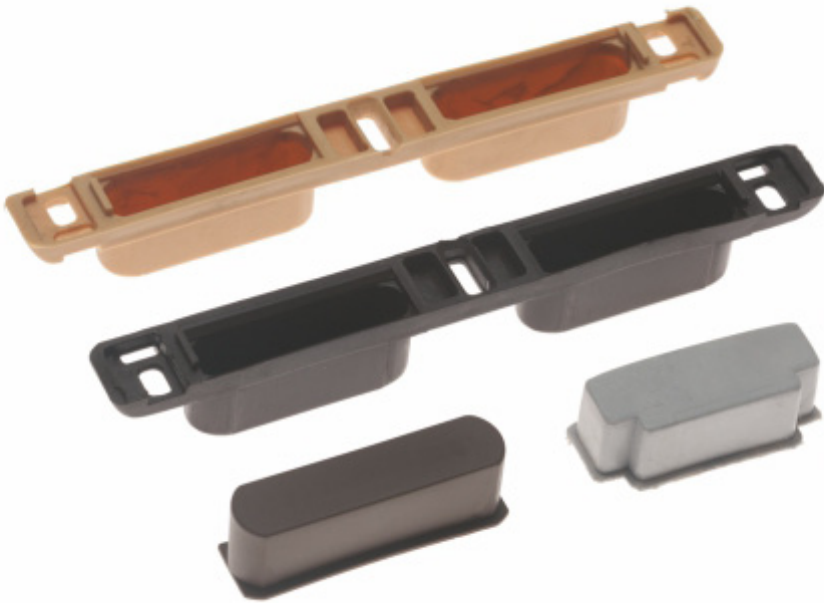
APPLICATION:

Used for a glass door adjustable frames

PACKAGE:

negotiated

Masking hole plugs



MATERIAL:

Plastic ABS.

COLOUR:

beige, brown, other colors to be negotiated

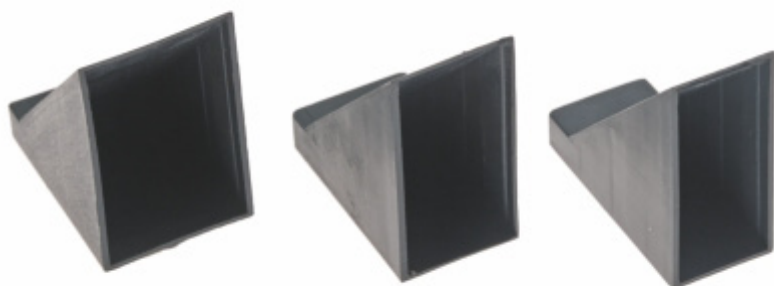
APPLICATION:

Decorative element plugging a hole in the sheet metal door frame coupling lock.

PACKAGE:

negotiated

Adjustable doorframes corner beads



MATERIAL:

Polypropylene PP

OVERALL DIMENSIONS:

16 mm, 19 mm, 24 mm

APPLICATION:

Protect the corners of the frame during transport

PACKAGE:

5000 pcs

Stationary doorframes coasters



MATERIAL:

Polyethylene LDPE.

OVERALL DIMENSIONS:

90x43; 100x43; 105x44; 100x43 – semicircular

APPLICATION:

Element constituting the protection of the base frame from soaking

PACKAGE:

1000 sets

Hole plugs



MATERIAL:

Polyethylene LDPE.

OVERALL DIMENSIONS:

Ø8; Ø10; Ø15

APPLICATION:

Decorative element plugging the hole

PACKAGE:

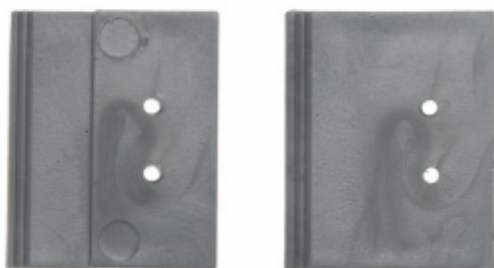
2000 pcs

COLOURS:

white, brown, beige, dark gray, calvados, black, natural oak, oak, light brown, maple, alder, nut, gray, wenge;

(we can choose any color to the desired frame color).

Doorframe masking slat striker



MATERIAL:

Polystyrene PS

OVERALL DIMENSIONS:

40x33x3

APPLICATION:

Installation assistance component band masking doorframe.

PACKAGE:

5000 pcs

Burglary-proof masking pin hole can

**MATERIAL:**

Polypropylene PP

OVERALL DIMENSIONS:

20x17x17, 29x25x29

APPLICATION:

Decorative hole blanking element

PACKAGE:

2000 pcs

COLOURS:

beige, brown, other colors to be negotiated

Double door latch bolt

**MATERIAL:**

Polypropylene PP

OVERALL DIMENSIONS:

Ø 15; 16,4x15,5

APPLICATION:

The eccentric coupling mounted in the frame

PACKAGE:

500 pcs

Cylindrical can

**MATERIAL:**

Deep drawing steel sheet DC-04, #1,5 mm,
electroplated coating – white zinc,

OVERALL DIMENSIONS:

54x30x28

APPLICATION:

Frame installation supporting element

PACKAGE:

1000 pcs

405 lock can

**MATERIAL:**

Deep drawing steel sheet DC-04, #0,8 mm,
electroplated coating – white zinc,

OVERALL DIMENSIONS:

187x38x23

APPLICATION:

The cover of the lock in the door frame consti-
tuting element

PACKAGE:

500 pcs

406 lock can


MATERIAL:

Deep drawing steel sheet DC-04, # 0,7 mm,
electroplated coating – white zinc,

OVERALL DIMENSIONS:

210X35

APPLICATION:

The cover of the lock in the door frame constituting element

PACKAGE:

500 pcs

Burglary-proof can


MATERIAL:

Steel sheet, # 1 mm,
electroplated coating – white zinc,

OVERALL DIMENSIONS:

67x26x20

APPLICATION:

Unit of equipment of doorframe with burglary-proof blockade

PACKAGE:

800 pcs

Riveting holes cylindrical can

**MATERIAL:**

Deep drawing steel sheet DC-04, #1,5 mm,
electroplated coating – white zinc,

OVERALL DIMENSIONS:

54x30x28, Ø hole 4,5 mm.

APPLICATION:

Frame installation supporting element

PACKAGE:

1000 pcs

Catching hole strengthen



MATERIAL:

Steel sheet, # 2 mm,
electroplated coating – white zinc,

OVERALL DIMENSIONS:

L 25: 51x17x18
L 55: 81x17x18
L 60: 90x17x18
L 136: 166x17x18

APPLICATION:

Frame installation supporting element

PACKAGE:

negotiated

Strengthen bracket



MATERIAL:

Steel sheet, # 1,5 mm,
electroplated coating – white zinc,

OVERALL DIMENSIONS:

L 200 mm 20x20
L 310 mm 20x20
L 420 mm 20x20

APPLICATION:

Frame installation supporting element

PACKAGE:

1000 pcs

Angular corners connector



MATERIAL:

Steel sheet, # 1,5 mm,
electroplated coating – white zinc,

OVERALL DIMENSIONS:

33x30x20

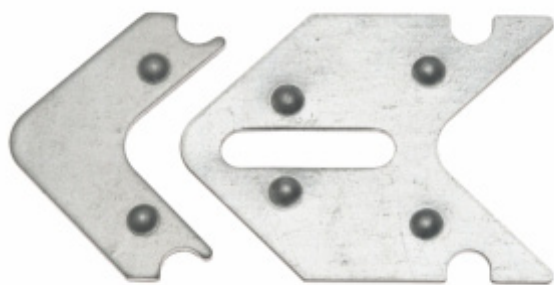
APPLICATION:

Frame installation supporting element

PACKAGE:

500 pcs

Corners connector small, large



MATERIAL:

Steel sheet, # 1,5 mm,
electroplated coating – white zinc,

OVERALL DIMENSIONS:

small: 35x29,5
large: 46,5x35

APPLICATION:

Frame installation supporting element

PACKAGE:

500 pcs

Sling striker "ear"

**MATERIAL:**

Steel sheet, # 2 mm,
electroplated coating – white zinc,

OVERALL DIMENSIONS:

47x30

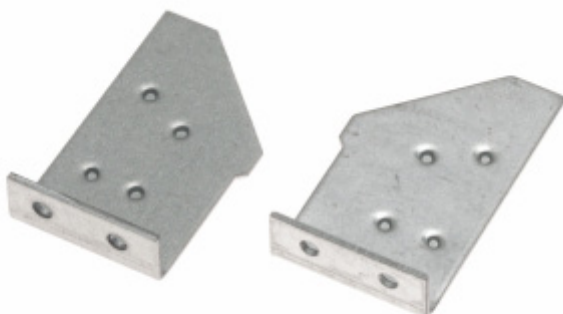
APPLICATION:

The element supporting the frame transport for
painting

PACKAGE:

500 pcs

Small tongue – left, right

**MATERIAL:**

Steel sheet, # 1,5 mm,
electroplated coating – white zinc,

OVERALL DIMENSIONS:

48x30x11

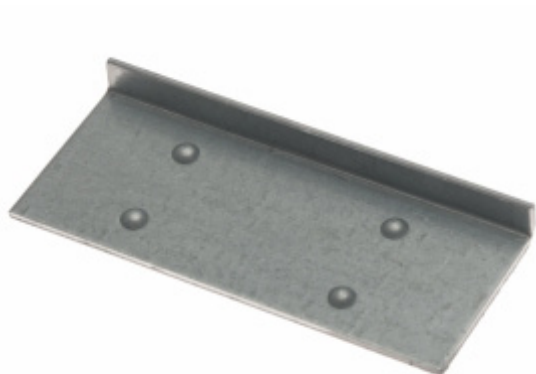
APPLICATION:

Frame installation supporting element

PACKAGE:

100 pcs

Large corner

**MATERIAL:**

Steel sheet, # 2 mm,
electroplated coating – white zinc,

OVERALL DIMENSIONS:

72x30x7

APPLICATION:

Frame installation supporting element

PACKAGE:

500 pcs

Large turnbuckle

**MATERIAL:**

Steel sheet, # 2 mm,
electroplated coating – white zinc,

OVERALL DIMENSIONS:

80x35x12

APPLICATION:

Frame installation supporting element

PACKAGE:

100 pcs

Small turnbuckle – left, right

**MATERIAL:**

Steel sheet, # 2 mm,
electroplated coating – white zinc,

APPLICATION:

Frame installation supporting element

PACKAGE:

1000 pcs

Assembly anchor

**MATERIAL:**

Steel sheet, # 2 mm,
electroplated coating – white zinc,

OVERALL DIMENSIONS:

97x40x40

APPLICATION:

Frame installation in plasterboard walls supporting element

PACKAGE:

300 pcs

Transitory toilet door ventilation tube – straight



MATERIAL:

Polypropylene PP

OVERALL DIMENSIONS:

Ø outer 48, Ø internal 39

APPLICATION:

Decorative element securing toilet door vents

PACKAGE:

1000 pcs

COLOURS:

white, brown, beige, dark gray, calvados, black, natural oak, oak, light brown, maple, alder, nut, gray, wenge;

(we can choose any color to the desired frame color).



Transitory toilet door ventilation tube



MATERIAL:

Polypropylene PP

OVERALL DIMENSIONS:

Ø outer 50, Ø internal 39

APPLICATION:

Decorative element securing toilet door vents

PACKAGE:

1000 pcs

COLOURS:

white, brown, beige, dark gray, calvados, black, natural oak, oak, light brown, maple, alder, nut, gray, wenge;

(we can choose any color to the desired frame color).



Strainer toilet door ventilation tubes



MATERIAL:

Polypropylene PP

OVERALL DIMENSIONS:

Ø outer 58, Ø internal 50

APPLICATION:

Decorative element securing toilet door vents

PACKAGE:

2250 pcs

COLOURS:

white, brown, beige, dark gray, calvados, black, natural oak, oak, light brown, maple, alder, nut, gray, wenge;

(we can choose any color to the desired frame color).



Door corner beads



MATERIAL:

Polypropylene PP

OVERALL DIMENSIONS:

43 mm, 45 mm, 47 mm, 51 mm, 63 mm,
67 mm, 72 mm

APPLICATION:

Protect the corners of the frame during transport

PACKAGE:

43 mm – 400 pcs;
45, 47 mm – 350 pcs;
51 mm - 300 pcs;
63, 67, 72 mm – 250 pcs;

Burglary-proof pin with metal plate



PIN MATERIAL:

steel bar Ø 12 type C1006,
zinc coated.

OVERALL DIMENSIONS:

Ø 12, length 77 mm

APPLICATION:

The burglar protection
constituting element

PACKAGE:

500 pcs

PLATE MATERIAL:

Steel sheet ST3, # 3 mm,
electroplated coating – white
zinc,

OVERALL DIMENSIONS:

53x22

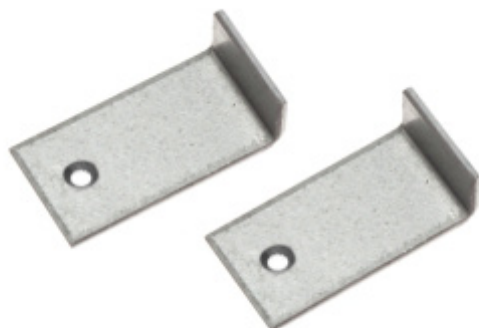
APPLICATION:

Doorframe strength
supporting burglary-proof pin

PACKAGE:

500 pcs

Window panel assembling plate



MATERIAL:

Galvanized sheet # 1,5.

OVERALL DIMENSIONS:

30x15x9

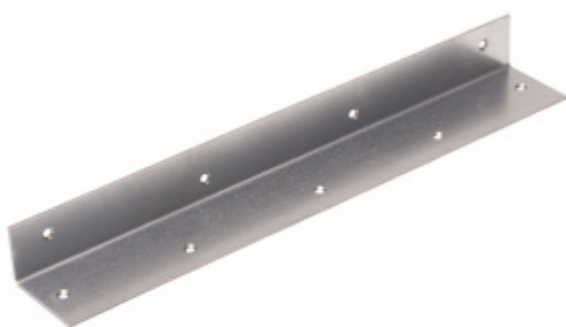
APPLICATION:

Window panel installation in door type EI30

PACKAGE:

500 pcs

Self-closing bracket



MATERIAL:

Galvanized sheet # 1,5.

OVERALL DIMENSIONS:

400x60x40

APPLICATION:

Self-closing installation supporting element

PACKAGE:

250 pcs

Burglary-proof pin long



MATERIAL:

Pin made of a steel bar covered by zinc coating.
Steel sheet ST3 # 3 mm, covered by zinc coating.

OVERALL DIMENSIONS:

Pin: Ø 10 and Ø 12, length 66 mm,
total length 80 mm
Sheet 53x22, Ø hole 5,5 mm

APPLICATION:

Pin is the burglar protection constituting element
Sheet is a doorframe reinforcement

PACKAGE:

negotiable

Burglary-proof pin short with sleeve without flange or with flange



MATERIAL:

Pin made of a steel bar covered by zinc coating.
Steel sheet ST3 # 3 mm, covered by zinc coating. Sleeve is galvanized.

OVERALL DIMENSIONS:

Pin: Ø 12, length 16 mm,
Sheet 52x20, Ø hole 5,5 mm
Sleeve without flange:
length 17 mm, Ø internal 15 mm.
Sleeve with flange:
length 17 mm, Ø internal 15 mm,
Ø flange 20 mm.

APPLICATION:

Pin is the burglar protection constituting element
Sheet is a doorframe reinforcement

PACKAGE:

negotiable

Burglary-proof pin with flat bar welded

**MATERIAL:**

Made of steel sheet DC-01, #3 mm.

OVERALL DIMENSIONS:

50x100, Ø pin 13 mm.

APPLICATION:

The burglar protection constituting element

PACKAGE:

negotiable

Technical doors corner beads

**MATERIAL:**

Polypropylene PP.

OVERALL DIMENSIONS:

95 mm

APPLICATION:

Protect the corners of the frame during transport

PACKAGE:

336 pcs

Window panel type EI60 assembling plate

**MATERIAL:**

Galvanized sheet # 1,5 mm.

OVERALL DIMENSIONS:

45x30x15, Ø hole 3,5 mm.

APPLICATION:

Window panel installation in door type EI60

PACKAGE:

200 pcs

Door anchor

**MATERIAL:**

Made of steel sheet #2 mm,
electroplated coating – white zinc.

OVERALL DIMENSIONS:

305x25 mm, Ø hole 8,5 mm and Ø 10 mm.

APPLICATION:

Door equipment

PACKAGE:

negotiable

Burglary-proof pin striker

**MATERIAL:**

Made of steel sheet DC-01, # 3 mm, satin
coating, chrome polish.

OVERALL DIMENSIONS:

120x42x13,5 mm, hole 20x20, Ø hole 5 mm

APPLICATION:

The burglar protection constituting element

PACKAGE:

negotiable

Lock pin 1

**MATERIAL:**

Made of steel sheet DC-01, # 3 mm, satin coating, chrome polish.

OVERALL DIMENSIONS:

120x72x13,5 mm, hole 13x50, Ø hole 5 mm

APPLICATION:

The burglar protection constituting element

PACKAGE:

negotiable

Lock pin 2

**MATERIAL:**

Made of steel sheet DC-01, # 3 mm, satin coating, chrome polish.

OVERALL DIMENSIONS:

120x150x13,5 mm, hole 13x50, Ø hole 5 mm

APPLICATION:

The burglar protection constituting element

PACKAGE:

negotiable



Z.P.U.H. HENZYM M. Jeka
81-009 Gdynia, Mylna 10 A
e-mail: henzym@henzym.pl
tel./fax 58 572 19 99

sstamp

representative

ORDER FORM

No.	Product name	QTY	meas.	Price (PLN)
1.				
2.				
3.				
4.				
5.				
6.				
7.				
8.				
9.				
10.				
11.				
12.				

Agreements

Payment method:

Payment date:

Delivery date:



GPS coordinates **N** 54°30'34" **E** 18°22'55"



Important phone numbers:

+48 502 151 364 - customer service, supply
+48 500 387 925 - customer service, marketing
+48 508 322 068 - office, administration
+48 502 604 925 - production
+48 502 792 122 - production

e-mail:

henzym@henzym.pl

Factory unit, legal address:

84-207 Koleczkowo,
Łężyce-Rogulewo, ul. Jarzębinowa 8-12
tel./fax 58 572 19 99

Invoice data:

ZPUH Henzym M. Jeka
81-009 Gdynia, ul. Mylna 10A
NIP PL 958 039 49 82



www.henzym.pl